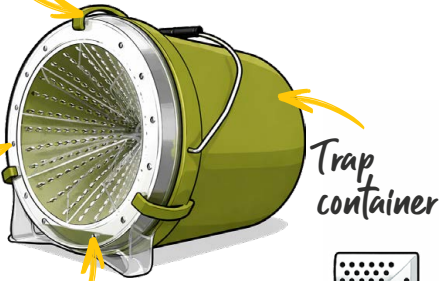


# How to set up Trap-X®

## 1 Trap-X® parts

Funnel mounting clips K3

Bycatch escape holes



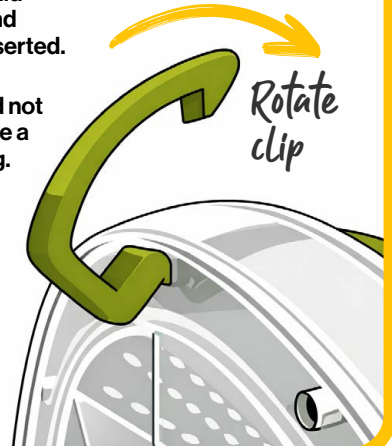
Trap container

Trap funnel lid Anti-escape elbow K1

## 2 Fitting the lid clips

Insert the clip into the lid opening at an angle and rotate until it is fully inserted.

The clips are designed not to fall out easily and are a snug fit when inserting.

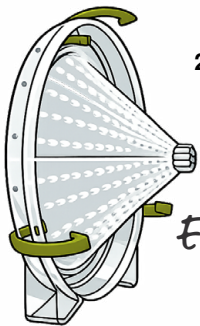


Rotate clip

## 3 Entrance reducer & elbow

Use the selective 7mm entrance reducer when hornet queens start building the primary nest at the end of spring, to avoid unnecessary bycatch.

1. Place the entrance reducer onto the funnel entrance.
2. Push the anti-escape elbow over both the reducer and the funnel.



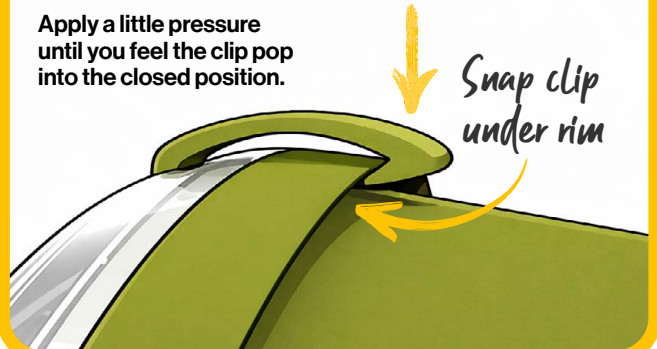
Entrance reducer

Anti-escape elbow

## 4 Close and secure

Use your thumb or the palm of your hand to close the clip onto the bucket lower rim.

Apply a little pressure until you feel the clip pop into the closed position.



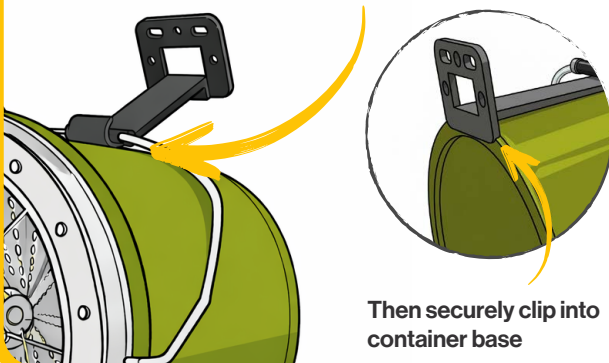
Apply pressure

Snap clip under rim

## 5 Hanging your trap

Use the optional hanging accessory to mount your trap onto a post or wall with a hook or screw.

Place the hanger under the handle first



Then securely clip into container base

## 6 Other securing methods

You can also use the strap accessory to hold the trap on a stand, or alternatively, in dry weather conditions, hang it from the handle on a branch or bracket.

Use a strap if required



# How to set up a Bait Pod™ lure container



## Wasp + Yellow-legged Asian Hornet Lure

Use VespaLure® high-performance lure with the Trap-X® and Bait Pod™ system for maximum trapping performance.

- All natural ingredients
- Long-lasting lure performance
- Contains a bee deterrent
- Powdered lure - just add water
- Each pack makes 2 litres

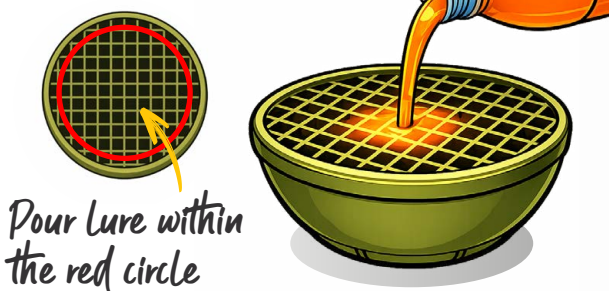
### 1 Open the Bait Pod

The Bait Pod™ has a push fit mesh lid. Remove the lid slowly, and if it feels tight, hold it to your chest and pull the lid upwards towards you.



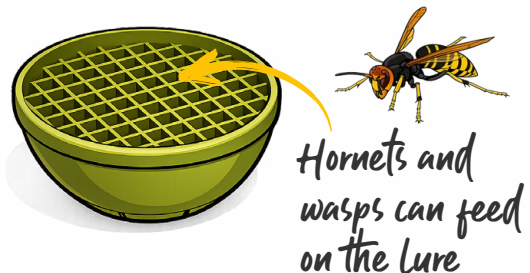
### 2 Fill with insect lure

Pour your prepared VespaLure® or other liquid lure into the central area of the Bait Pod™. Refresh lure or every 2 or 3 weeks, depending on ambient conditions and the type of lure used



### 3 Use as a feeding station

To deploy your Bait Pod™ as a feeding station, simply set the baited Bait Pod™ without the mesh lid. A feeding station provides a controlled place for Yellow-legged Asian hornets to feed and return. This, for example, allows observation of activity levels and tracking of flight directions.



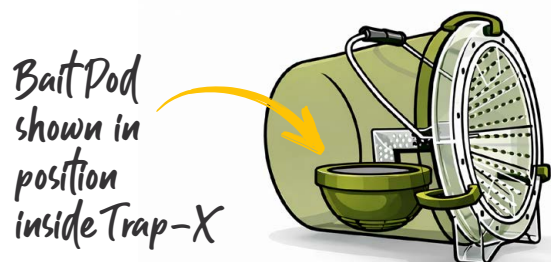
### 4 Use as a monitoring station

To deploy your Bait Pod™ as a monitoring station, set the baited Bait Pod™ with the mesh lid on. This provides a controlled point where Yellow-legged Asian hornets and wasps can be identified in the deployment location.



### 5 Using with Trap-X®

To use the Bait Pod™ with Trap-X®, place the baited pod inside the trap container. The Bait Pod™ has a weighted base, allowing it to remain upright whether the trap is deployed upright or on its side. Once the pod is in position, refit and secure the trap funnel lid.



VO05-INS-25-3-2026



© Copyright 2026 Apitura Innovation Ltd - All Rights Reserved.

Scan QR code for more information



apitura.com