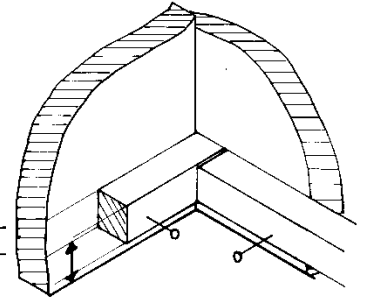
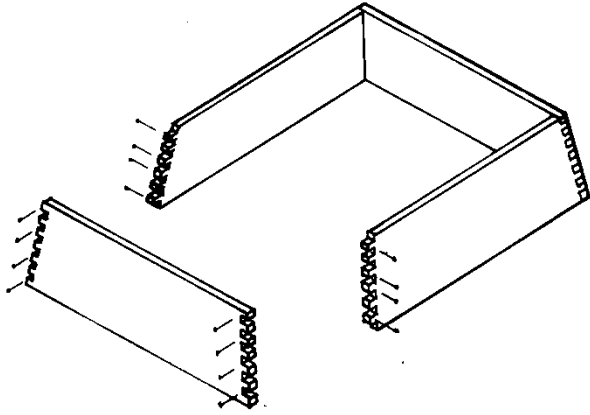


# Hive Assembly - W.B.C.

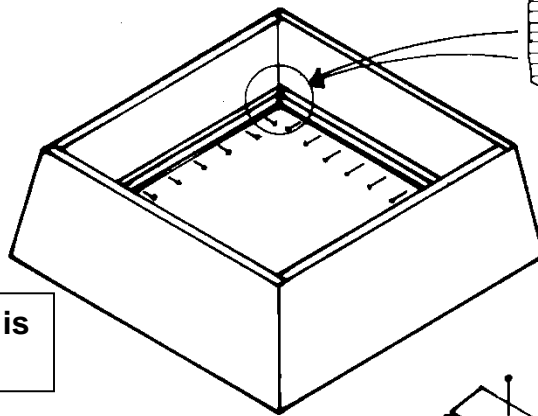
## Lift or Lift with porch

1. Push the four walls together. Nail corners using 1.5" nails. NOTE: the top and bottom edges of lift are bevelled thus ensuring that, as the lift slopes inwards, the top and bottom are horizontal.



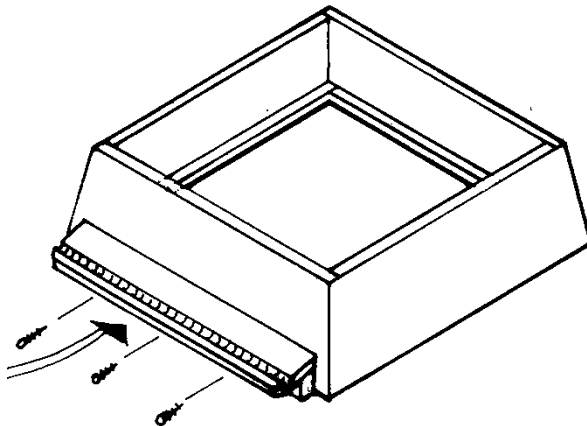
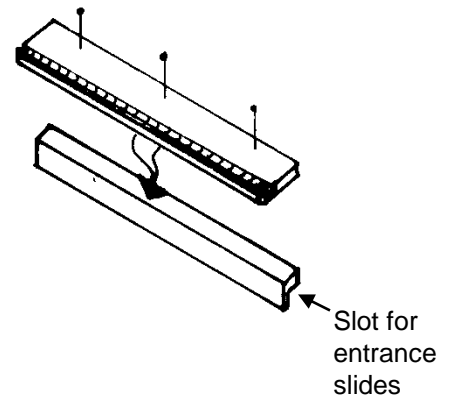
Use a PVA glue when assembling.

2. Nail laths  $\frac{1}{2}$ " up from inside, using 1" nails. NOTE: The end of the lift laths are bevelled and slope with the wall of lift



Check regularly that the lift is square

3. Nail roof to porch, rain channel uppermost, roof flush with back of porch, using 1.5" nails.



4. Place lift flat on bench and position porch centrally to one of the sides, ensuring base of porch is flat on bench. Screw porch in place, using 1.5" black japped screws.



For a Youtube video showing how to assemble the lift follow the link below or scan the QR Code.  
<https://youtu.be/dCMcGtpyzg>

**THORNE**

**E.H. THORNE (Beehives) LTD**

Beehive Business Park, Rand, Nr. Wragby, Lincolnshire LN8 5NJ

Tel. 01673 858555

sales@thorne.co.uk

www.thorne.co.uk