

APISOLIS

NATURALLY ACTIVE



Please consult this manual before use

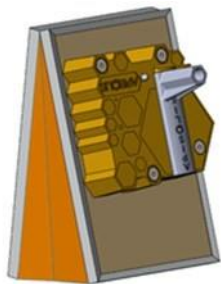


Introduction

We would like to thank you for choosing Apisolis, the vaporizer to inspect differently and serenely your hives. This manual has been designed to ensure the correct operation and maintenance of this appliance. For any question not mentioned here: please contact customer service by email : sav@apisolis.com

Section I : Safety Precautions

1- Transportation and storage



Spout up position

- Apisolis must be stored with the spout up (see figure opposite).
- During transportation, make sure that Apisolis is not in contact with other objects that could damage it.

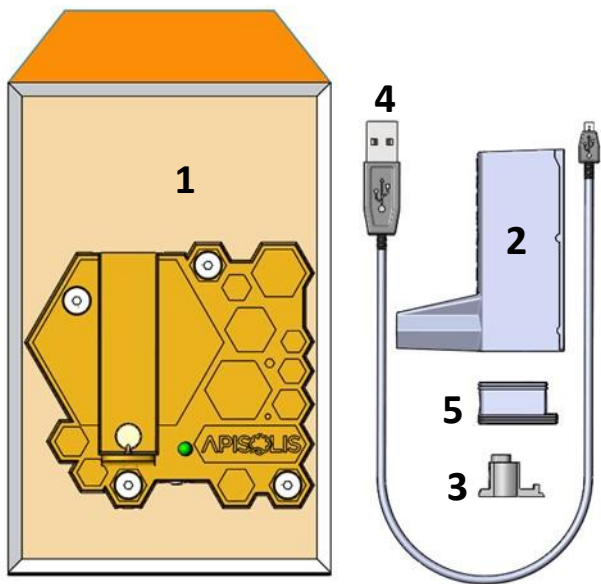
2– Safety and usage precautions

- Do not use this vaporizer for any purpose other than inspecting hives.
- Keep out of the reach of children.
- Do not pour liquid on Apisolis or immerse it in water, as this may damage it.
- Do not use the appliance in environments with extreme temperatures or in very humid or very dusty conditions.
- Apisolis must not be stored outdoors.
- Do not fling the appliance or drop it, as it will get damaged.
- Do not attempt to change the battery yourself or use compatible spare parts.
- Take care not to damage or dirty the micro USB port required for recharging which is located under Apisolis.
- Requires the addition of a Native* solution to operate.

**The Native solution is protected by a registered patent.*

Section II : Components and functions

1– Contents of the box



2– Table of components and functions

No.	Component name	Description of the function
1	Vaporizer	Main unit composed of the bellows, the container for the tank and the electronics
2	Tank	Designed to contain the Native solution to be vaporized through the spout as well as the sealing part and the resistance
3	Resistance	Designed to heat the Native solution and convert it into steam
4	USB cable	To recharge the Apisolis battery via the micro USB port
5	Sealing part in silicone	Is used to seal the tank and accommodate the resistance

Section III : Comissioning

Before using this tool, please make sure to scrupulously respect the following steps :

1– Filling the tank



Pour the Native solution into the tank through the opening provided for this purpose.

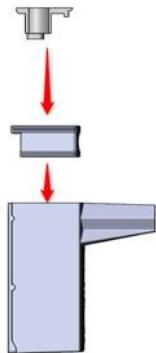
Warning: fill up to the limit of the internal reinforcements of the tank (see below).

2– Preparing the resistance

When using a new resistance, it must first be soaked in the Native solution to thus avoid burning the cotton integrated into it, when switching on Apisolis.

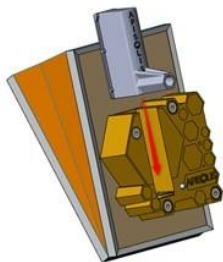


3- Installation of the resistance



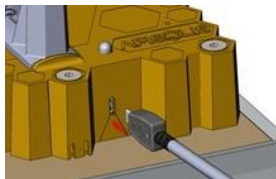
- Place the resistance (previously soaked for at least 5 minutes) in the sealing part
- Then put the sealing part to the tank, ensuring that the solution poured does not overflow.

4- Installation of the tank



- Insert the tank into the space provided for this purpose on the vaporizer, up to the stop.

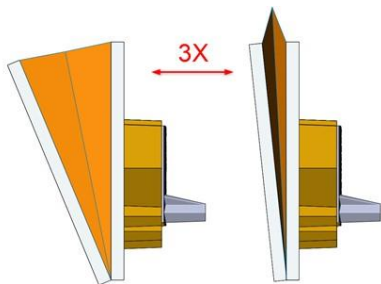
5- Recharging



- Connect the USB cable, supplied in the box, to the micro USB port placed under the vaporizer.

Section IV : Operation

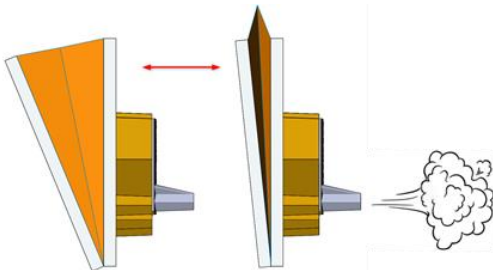
1- Starting



- There is no On-Off button. To start Apisolis, open and close the bellows 3 times in a vertical position, spout down. An audible signal will

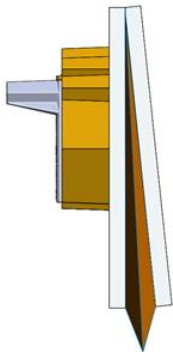
sound 4 times.

2- Activating steam



- Once started, it suffices to open and close the bellows to produce steam.

3- Turning off the vaporizer



3s.



- To turn off Apisolis, keep the bellows closed with the spout upward for 3 seconds. A signal will sound once.
- After 20 minutes of inactivity, Apisolis switches off automatically to save battery.

4- Checking the battery level



2 s.



- Apisolis off (and only in this case) : keep the bellows closed, spout upward for 2 seconds. The colored LED will indicate the battery level :

Rogue: Low battery (0 to 40%) remember to recharge

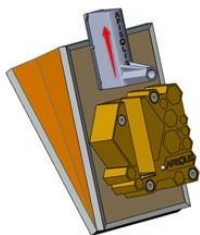
Orange: half battery (40 to 80%)

Green: battery charged (80 to 100%)

Section V : Maintenance

- It is recommended to carry out complete recharging cycles during the first weeks of use in order to optimise battery life.
- Once use is complete, it is best to clean any traces of liquid from the tank and container connectors. Do not use any liquid to clean Apisolis.

1– Replacing the resistance



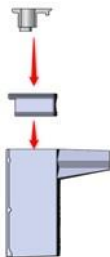
a) Remove the vaporizer tank



b) take out the resistance from the silicone support

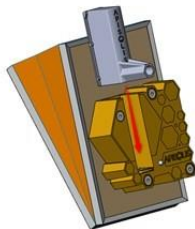


c) Take out the Silicone tank support



c) Soak the new resistance (see section III) then place it in the silicone support.

The resistance must be fully inserted. Then place the assembly in the tank.



d) Place the tank back in the vaporizer. Check that there are no major leaks once the tank is in place. NB: the presence of micro leaks is normal.

2– Recharging Apisolis

- Connect the USB cable to the micro USB port placed under the vaporizer.
- Connect the other end to a computer's USB port or a fast charge compatible USB charger (2.1 A), not included.
- During charging, the LED will flash with the indication of its charge status: steady green when fully charged.

3– Guarantee : The legal guarantee of conformity and against hidden defects is 2 years: it guarantees that the product received conforms to the description of the product ordered and that there are no hidden defects. Otherwise contact customer service : sav@apisolis.com

Section VI : Troubleshooting

CAUSE	SOLUTION
The LED is flashing red	Check that the resistance in the tank is functioning correctly, then check that it is correctly placed.
Apisolis does not produce enough steam	Replace the resistance
Presence of liquid under the resistance	Wipe the connection pins under the resistance to prevent liquid from making contact between the two
Apisolis won't come on	Check the battery level and recharge if necessary. If the problem persists, contact the after-sales service by email

The situations above are the faults generally observed and the operations recommended for troubleshooting. For any other malfunction, please contact customer service by email : sav@apisolis.com



